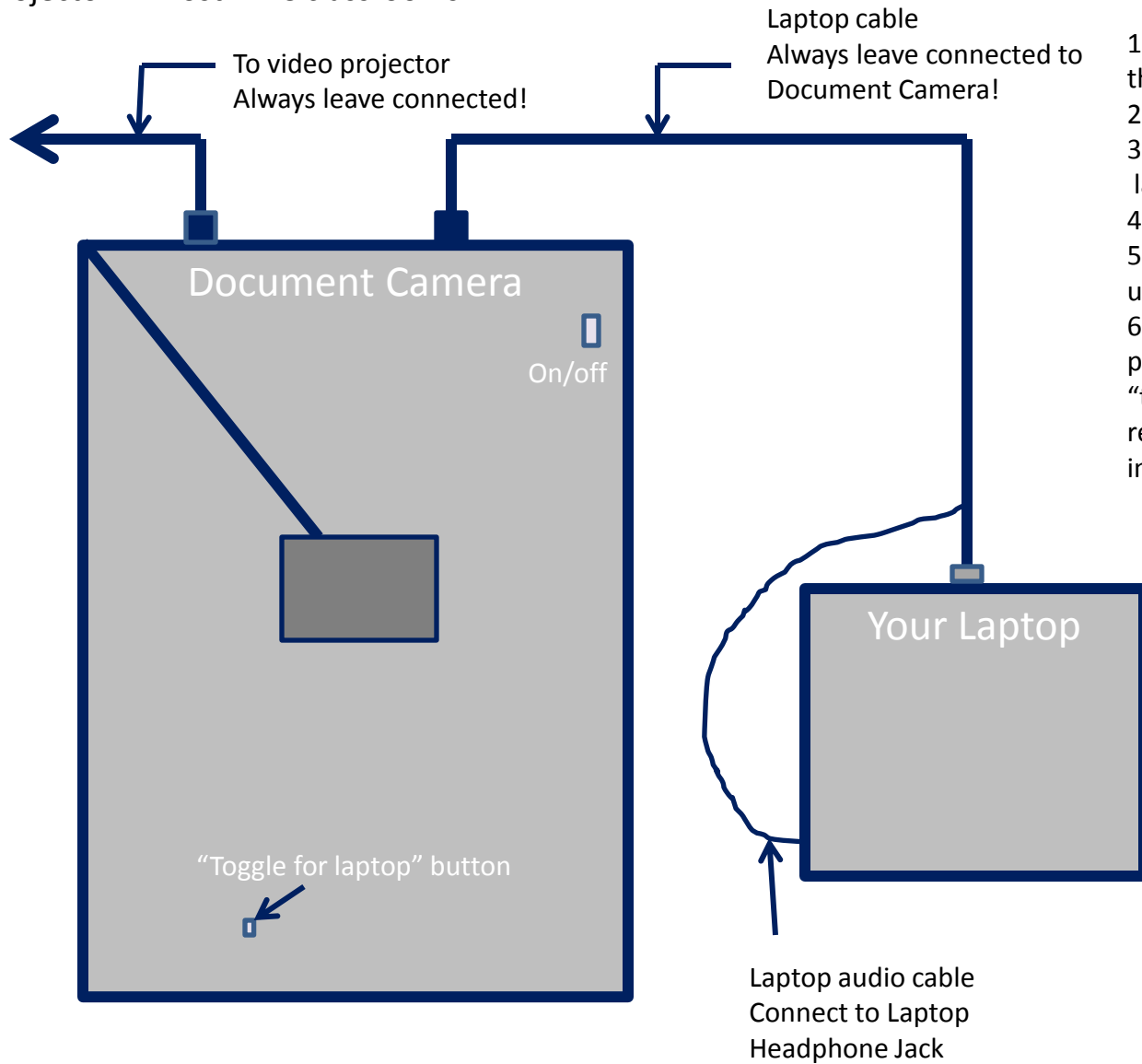


## How to connect a laptop to a classroom projector in most MBC classrooms



1. Turn on projector, wait until the On button stops flashing
2. Select Laptop/Doc Cam
3. Plug laptop cable into your laptop
4. Turn on document camera
5. Turn on your laptop, wait until you see your desktop
6. If you do not see the laptop picture on the screen, push the "toggle for laptop" button repeatedly until you see the laptop image on the projection screen.